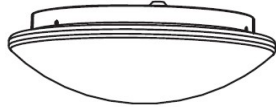
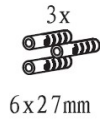
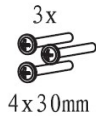


OFF



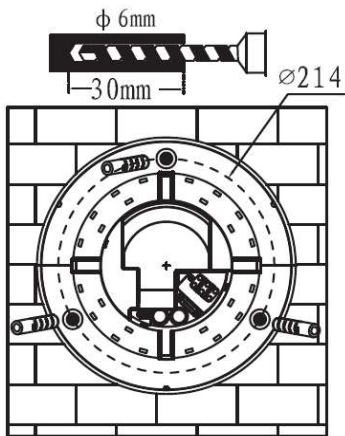
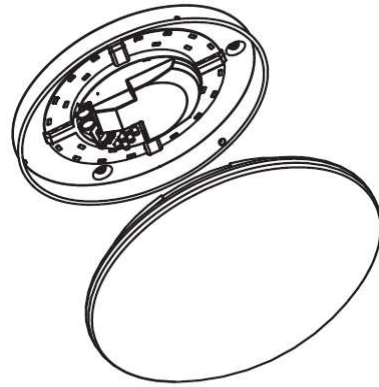
WARNING

- 1) Switch off the power supply before installation
- 2) Installation should be done by registered electricians

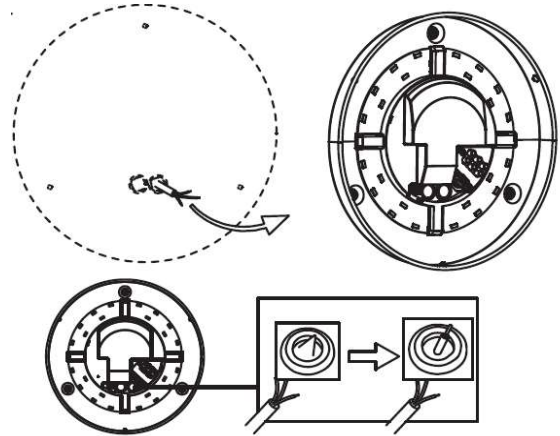


1

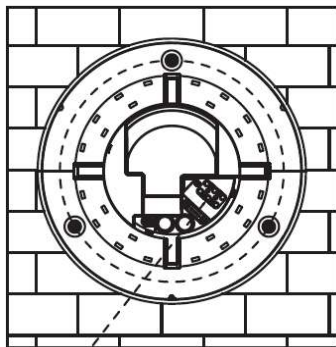
2



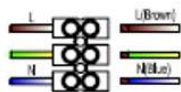
3



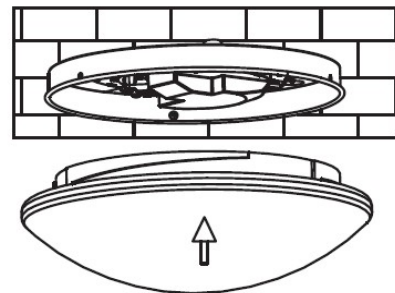
4



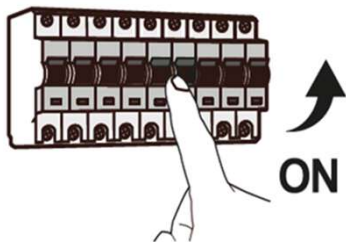
5



220-240V~ 50HZ /max.2,5mm



6



ON

7

2030.50304.0196

ENERGY

e2 elektro
2030503040196-L

A
B
C
D
E
F
G

F

15 kWh/1000h

2015/06/20